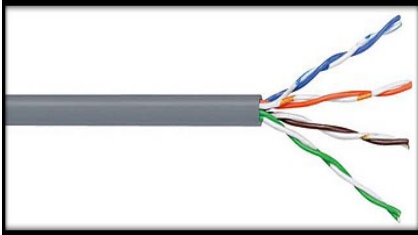


DRAKA CABLES:

CAT5E



STANDARD: EIA/TIA 568A, ISO/IEC 11801 2ND ED, IEC 61156-5, EN50173, EN 50288-3-1

VOLTAGE RATING:

APPLICATION:

Category 5e is a twisted pair cable designed for high signal integrity with added specification over Cat 5 for far end cross talk. This cable is used for computer networks such as ethernet and is also used to carry many other signals (basic voice services, Token ring, ATM etc)

CONDUCTOR: Bare copper wire 0.5mm diameter (AWG24)

INSULATION: Polyethylene 0.9mm diameter

TWISTING: 2 cores to the pair

CABLE LAY UP: 4 pairs to the core

SHEATH: PVC grey, OHLS violet

MINIMUM BENDING RADIUS: Installation 8D, Installed 4D

TEMPERATURE RANGE:

During operation -20°C up to +60°C

During installation 0°C up to +50°C

DC LOOP RESISTANCE: $\leq 190 \Omega/\text{km}$

RESISTANCE UNBALANCE: $\leq 2\%$

INSULATION RESISTANCE (500V): $\geq 2000 \text{ M}\Omega/\text{km}$

CAPACITANCE AT 800Hz: nom. 48nF/km

CAPACITANCE UNBALANCE (PAIR TO GROUND): $\leq 1500 \text{ pF}/\text{km}$

CHARACTERISTIC IMPEDANCE (1-100 MHz): $(100 \pm 15) \Omega$

NOMINAL VELOCITY OF PROPAGATION: Approx 67%

PROPAGATION DELAY: Nominal $\leq 535 \text{ ns}/100\text{m}$

DELAY SKEW: Nominal $\leq 20 \text{ ns}/100\text{m}$

TEST VOLTAGE (DC, 1 min) CORE/CORE: 1000V.