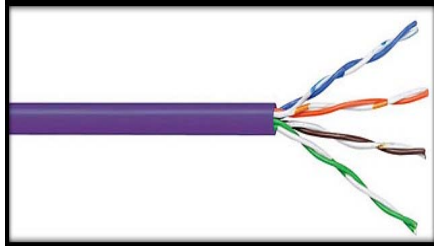


DRAKA CABLES:

CAT6



STANDARD: EIA/TIA 568A, ISO/IEC 11801 2ND ED, IEC 61156-5, EN50173, EN 50288-3-1

VOLTAGE RATING:

APPLICATION:

Twisted pair cable for gigabit ethernet and other network protocols. Backward compatible with Cat 5e performance of up to 250MHz is achieved.

CONDUCTOR: Bare copper wire 0.57mm diameter (AWG23)

INSULATION: Polyethylene 1mm diameter

TWISTING: 2 cores to the pair

CABLE LAY UP: 4 pairs to the core. Non metallic cross separator (spline)

SHEATH: PVC grey, OHLS violet

MINIMUM BENDING RADIUS: Installation 8D, Installed 4D

TEMPERATURE RANGE:

During operation -20°C up to +60°C

During installation 0°C up to +50°C

DC LOOP RESISTANCE: $\leq 176 \Omega/\text{km}$

RESISTANCE UNBALANCE: $\leq 2\%$

INSULATION RESISTANCE (500V): $\geq 5000 \text{ M}\Omega/\text{km}$

CAPACITANCE AT 800Hz: nom. 48nF/km

CAPACITANCE UNBALANCE (PAIR TO GROUND): $\leq 1500 \text{ pF}/\text{km}$

CHARACTERISTIC IMPEDANCE (1-100 MHz): $(100 \pm 15) \Omega$

CHARACTERISTIC IMPEDANCE (100-250 MHz): $(100 \pm 22) \Omega$

NOMINAL VELOCITY OF PROPAGATION: Approx 67%

PROPAGATION DELAY: Nominal $\leq 535 \text{ ns}/100\text{m}$

DELAY SKEW: Nominal $\leq 20 \text{ ns}/100\text{m}$

TEST VOLTAGE (DC, 1 min) CORE/CORE: 1000V.